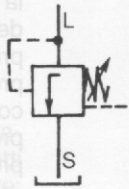
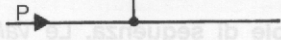
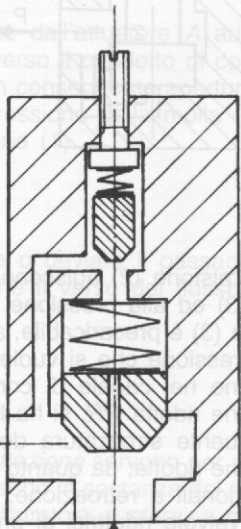
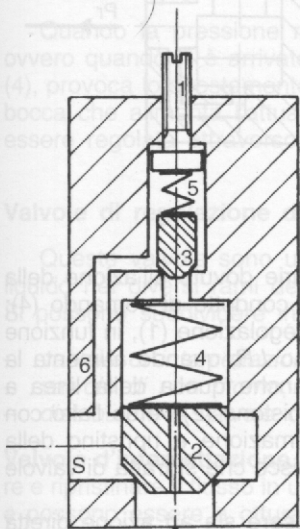
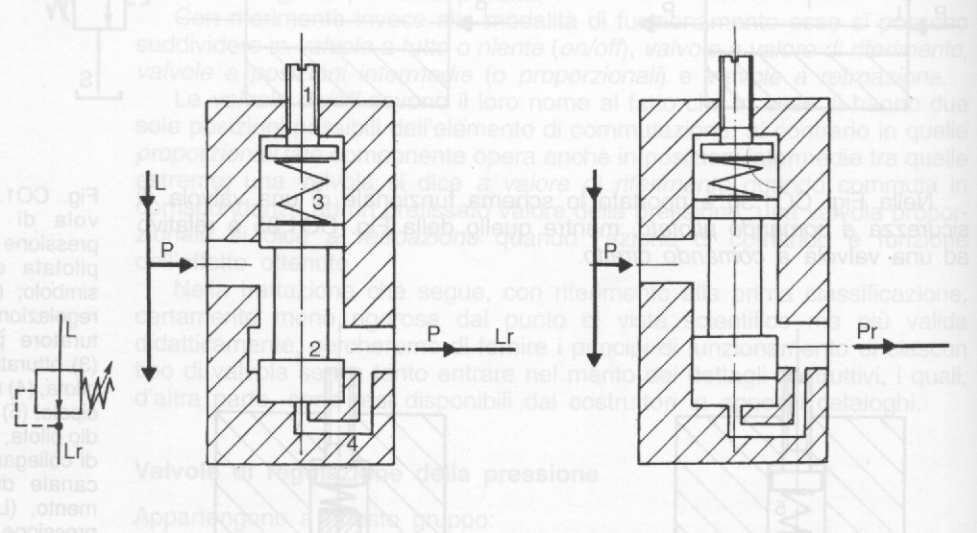
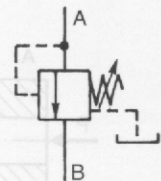
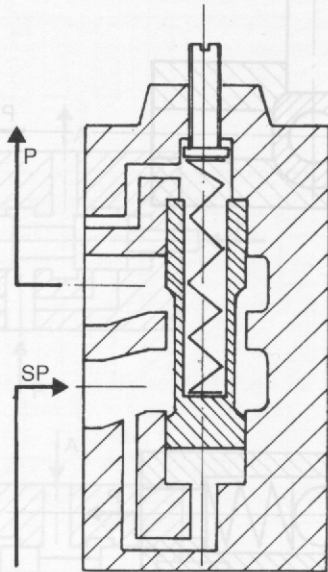
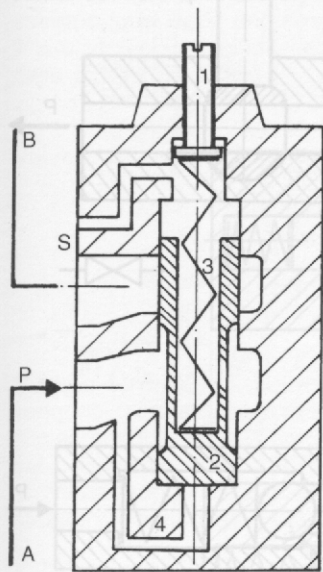


Fig. CO1.35 - Valvola di massima pressione ad azione diretta e relativo simbolo; (1) vite di regolazione, (2) otturatore, (3) molla, (4) corpo valvola, (5) raccordo filettato, (L) linea in pressione, (S) scarico al serbatoio.



simbolo;
 regolazio
 turatore
 (3) ottura
 pilota, (4)
 cipale, (5)
 dio pilota
 di collega
 canale
 mento, (6)
 pressione
 co del s





vite di regolazione
 (2) cassetto scorre
 vole, (3) molla, (4)
 condotto pressio
 di comando, (A) l
 nea utilizzatore prin
 cipale, (B) linea ut
 lizzatore in sequen
 za (S) spurgo, (SP)
 sovrappressione.

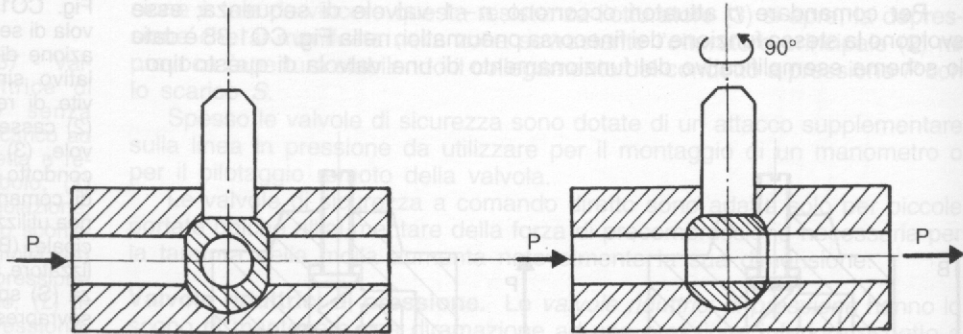
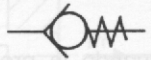
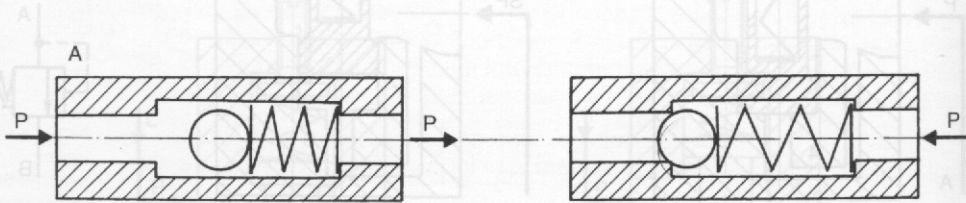
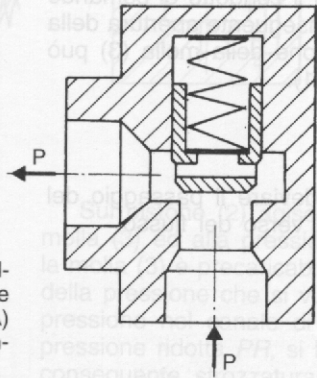


Fig. CO1.39 - Valvola d'intercettazione a sfera e relativo simbolo.

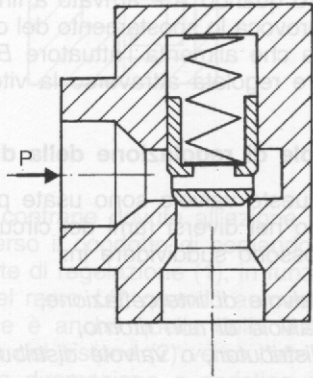


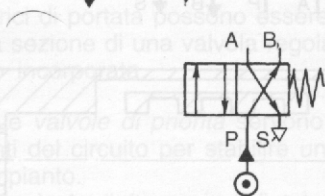
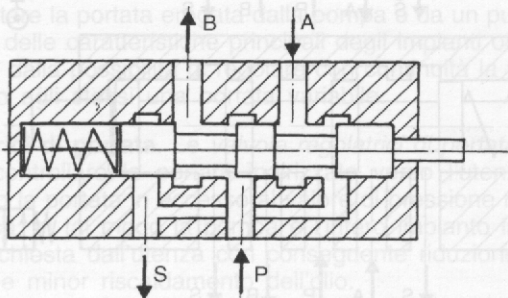
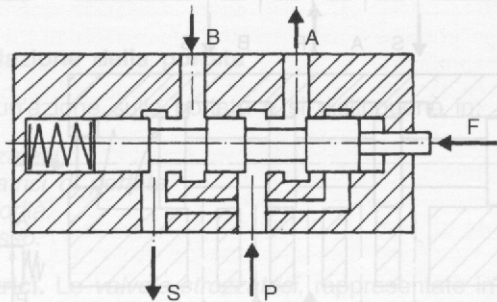


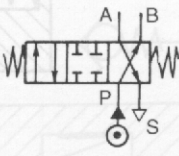
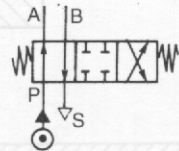
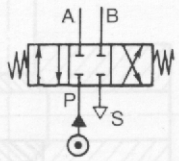
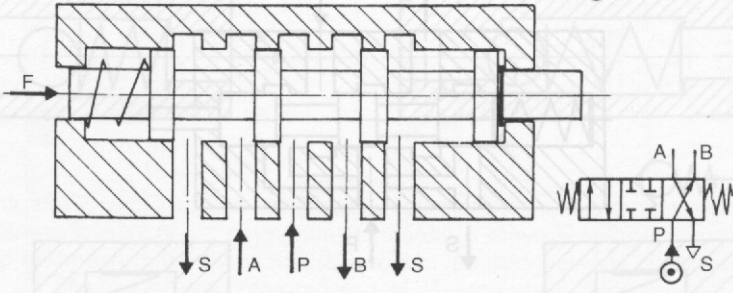
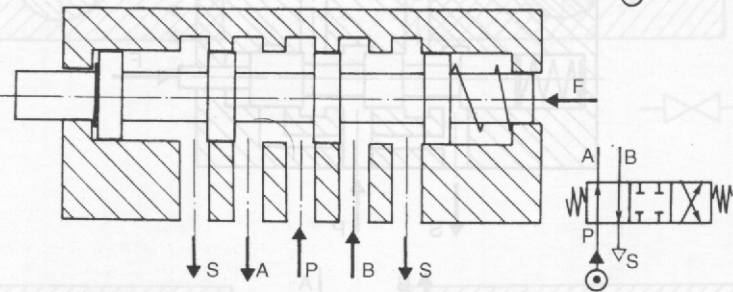
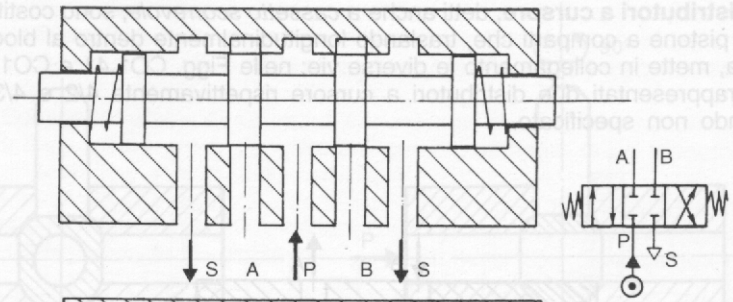
B

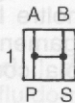
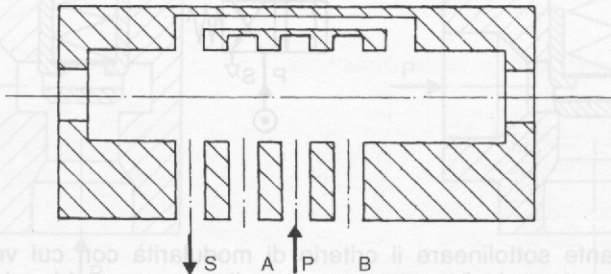


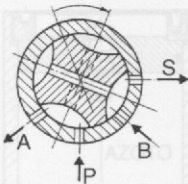
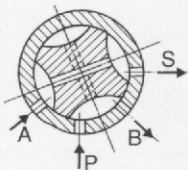
- Val-
orno e
olo; (A)
ad an-











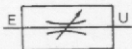
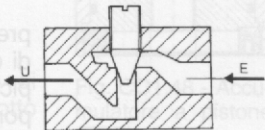
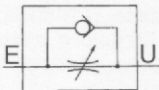
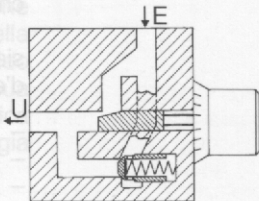
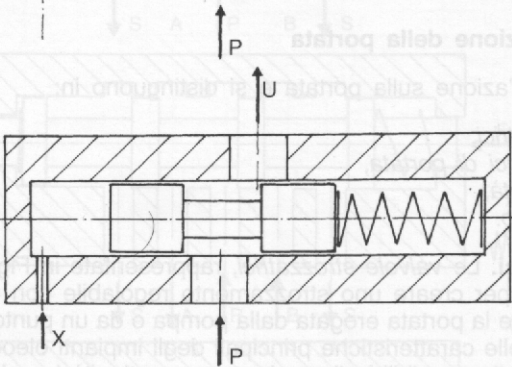
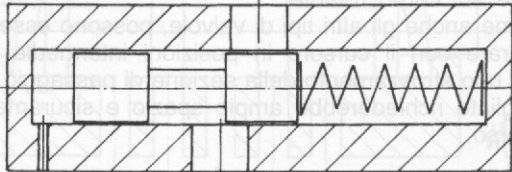
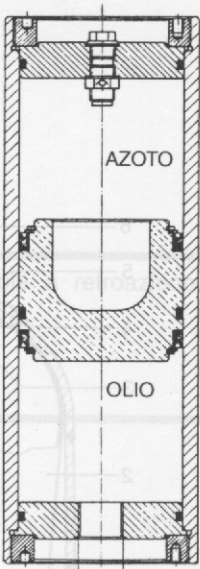
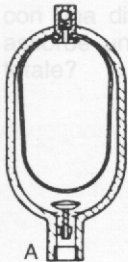


Fig. CO1.45 - Valvola strozzatrice e relativo simbolo.

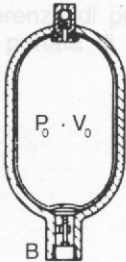




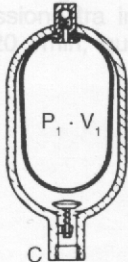




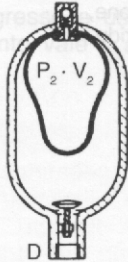
A



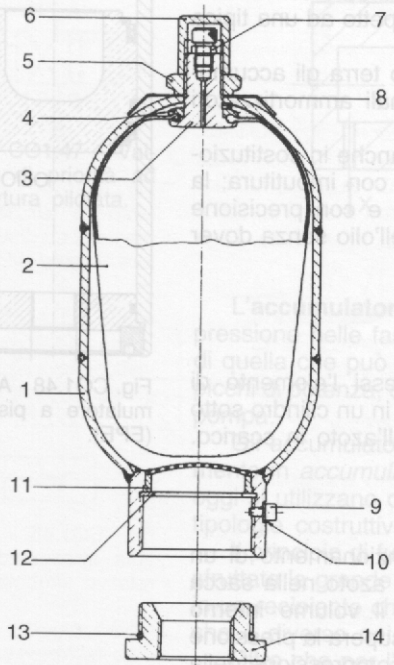
B



C



D



CO1.50 - Accumulatore a sacca per bassa pressione (EPE); (1) corpo, (2) sacca, corpo valvola gas, (4) rondella gommata, dado di fissaggio valvola gas, (6) tappo teleton. (7) valvola gonfiaggio, (8) tar-

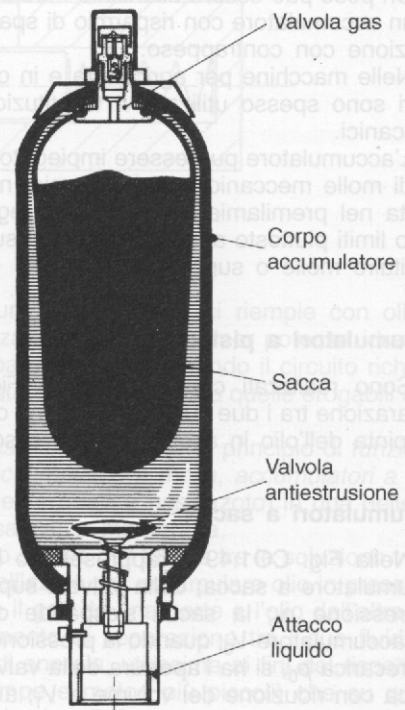


Fig. CO1.51 - Accumulatore a sacca per alta pressione.