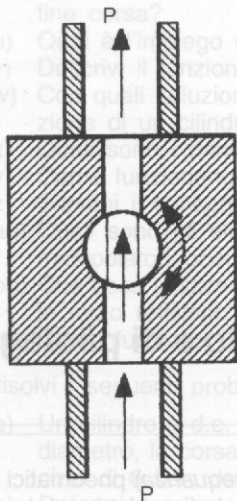
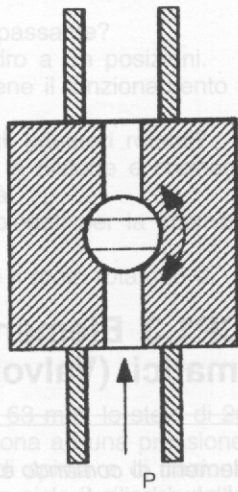


lato componenti



lato componenti



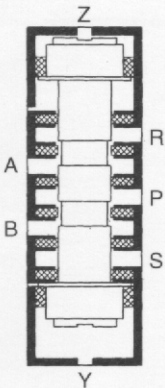
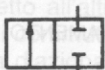


Fig. CP1.94

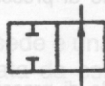
## DENOMINAZIONE

## RAPPRESENTAZIONE

Valvola 2/2 normalmente chiusa



Valvola 2/2 normalmente aperta



Valvola 3/2 normalmente chiusa



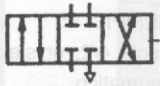
Valvola 3/2 normalmente aperta



Valvola 4/2



Valvola 4/3 con centro chiuso



Valvola 4/3 con centro in scarico



Valvola 5/2 a due scarichi separati



## AZIONAMENTO MUSCOLARE

generico



a pulsante



a leva



a pedale



## AZIONAMENTO MECCANICO

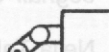
a tasto



a leva a rullo



a leva a rullo  
unidirezionale



## AZIONAMENTO PNEUMATICO

segnale di pressione



segnale di pressione tramite  
servopilota



## AZIONAMENTO MISTO

solenoido e servopilota



## AZIONAMENTO ELETTRICO

a un solenoide



a due solenoidi  
concordi



a due solenoidi  
contrapposti



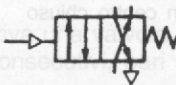
### ESEMPIO 1:

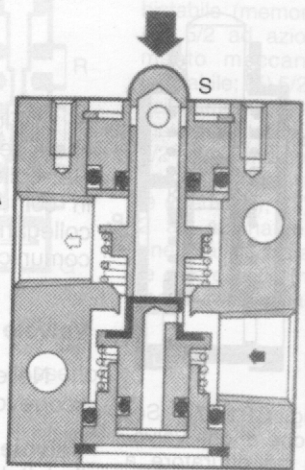
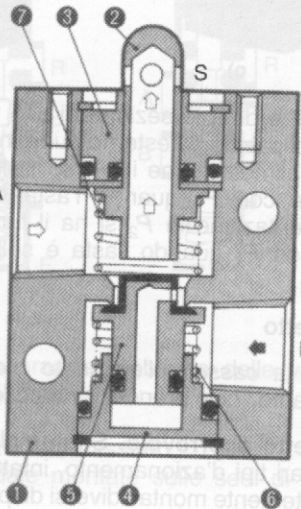
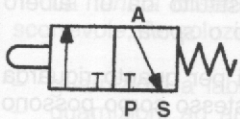
valvola 3/2, unistabile con azionamento  
a pulsante



### ESEMPIO 2:

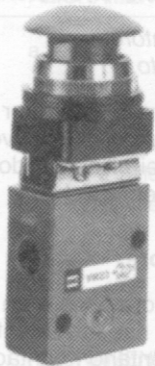
valvola 4/2, unistabile con azionamento  
pneumatico







**a)**



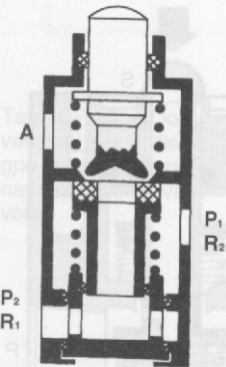
**b)**



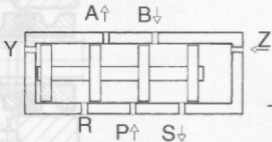
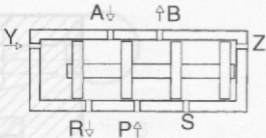
c)

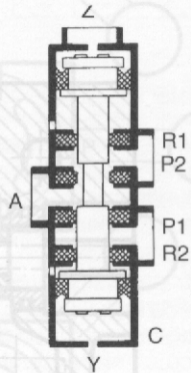
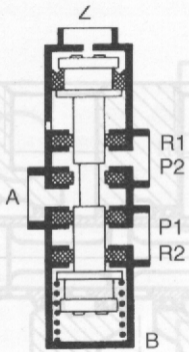
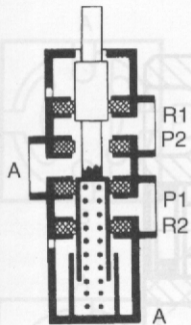


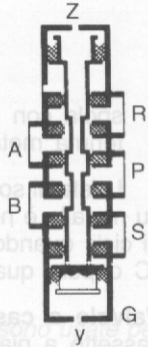
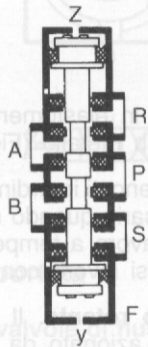
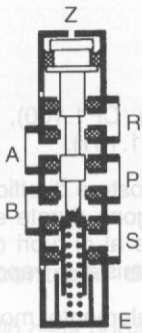
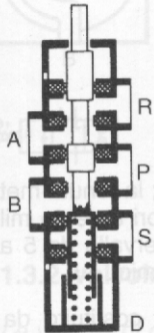
d)

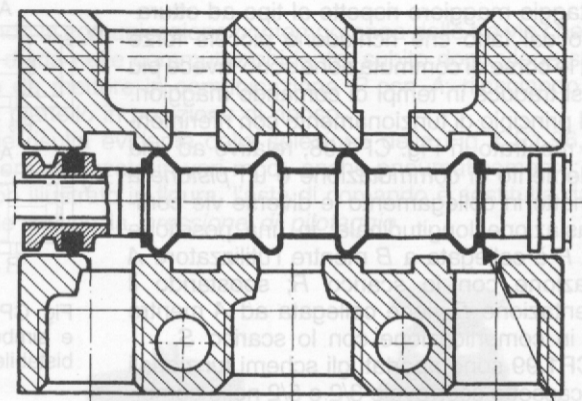




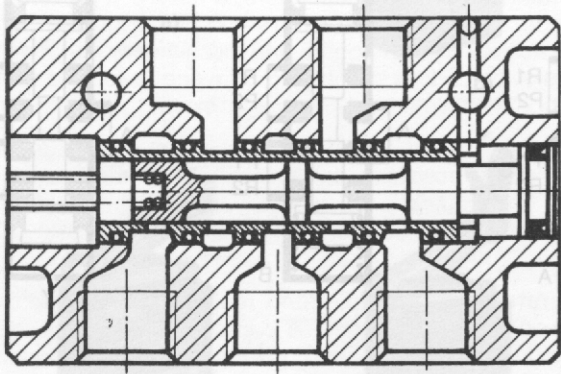


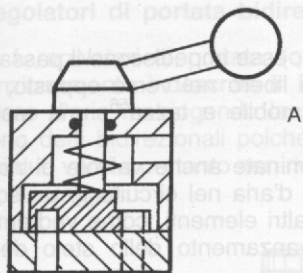




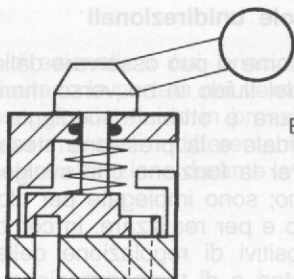


elastomero vulcanizzato

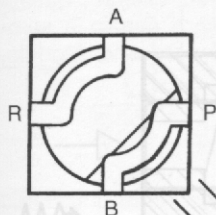




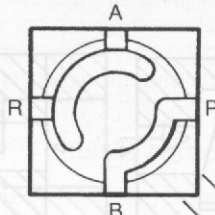
A



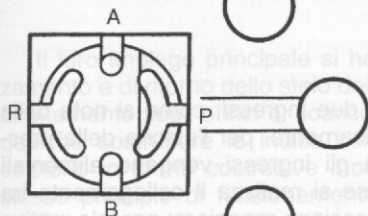
B



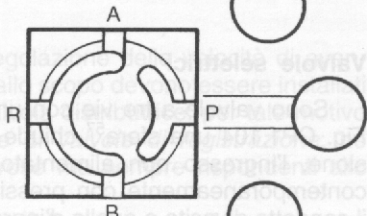
A



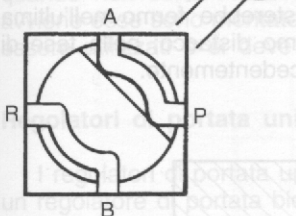
A



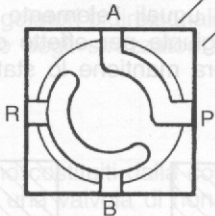
A



A

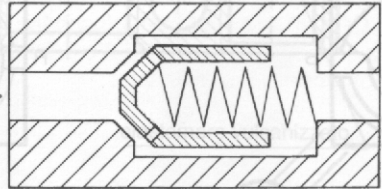
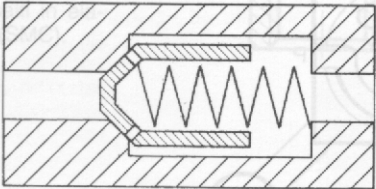


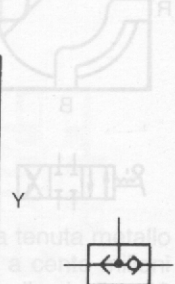
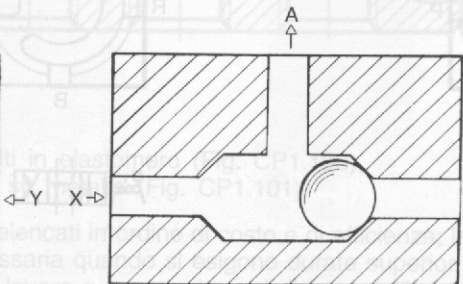
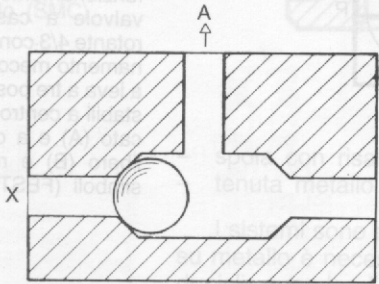
A



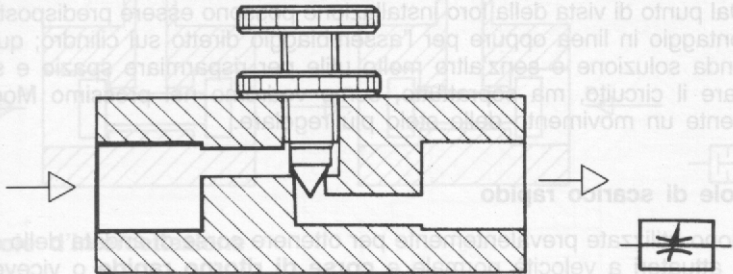
A











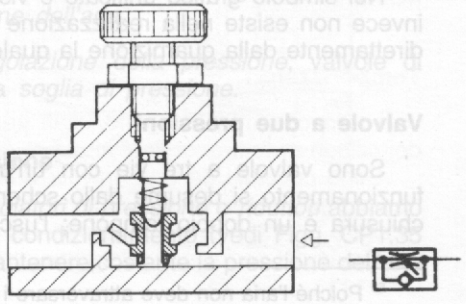
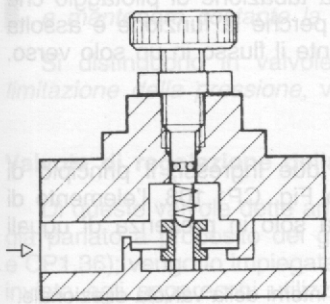
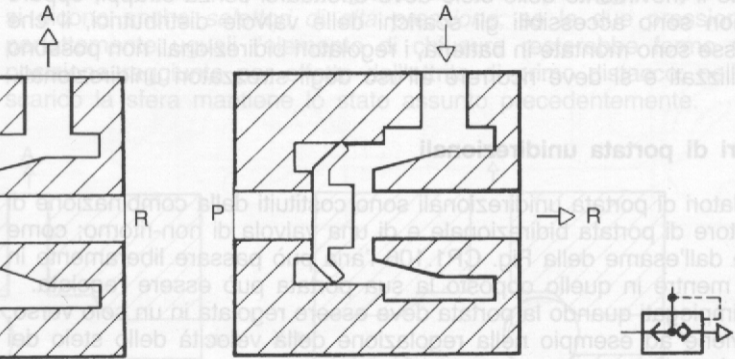
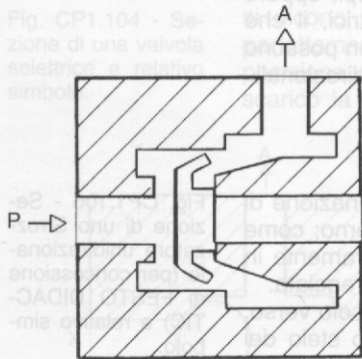
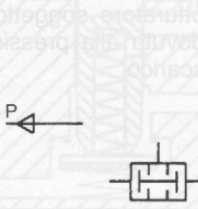
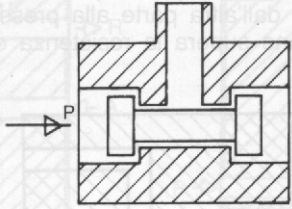
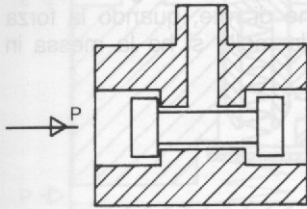
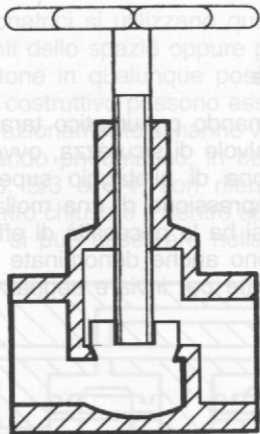
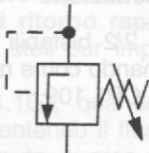
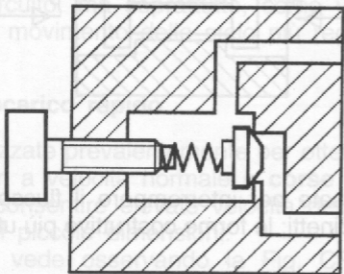


Fig. CP1.104 - Sezione di una valvola









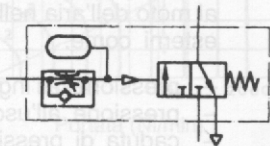
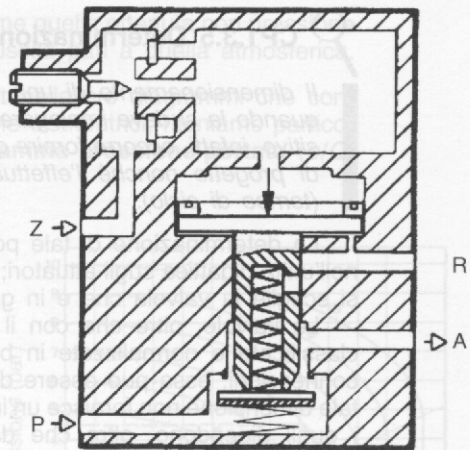
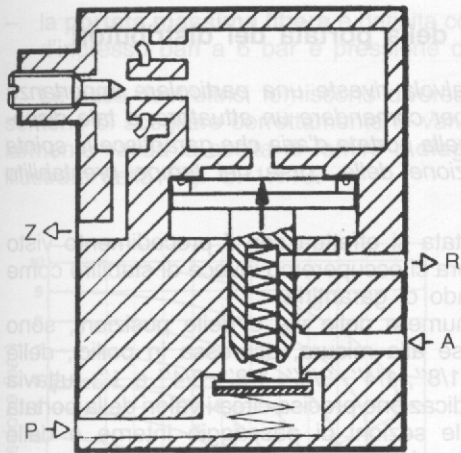


Fig. Sezion temp NC simb

Valvole posizionate

