

$$I = \frac{U}{a_1} + I_C$$

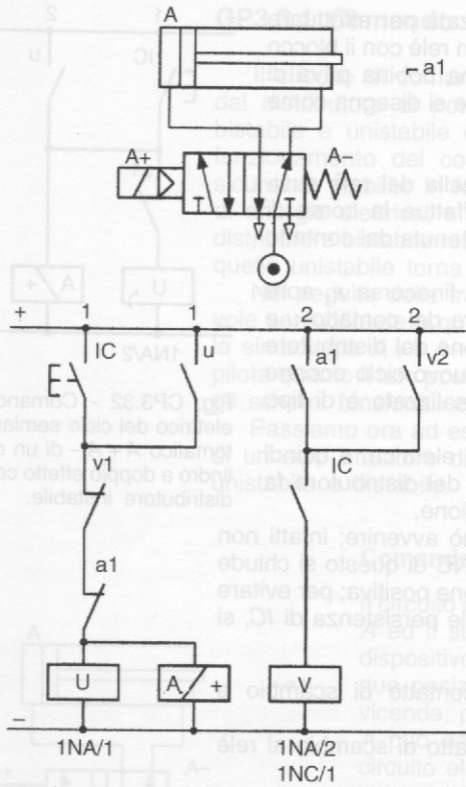


Fig. CP3.33

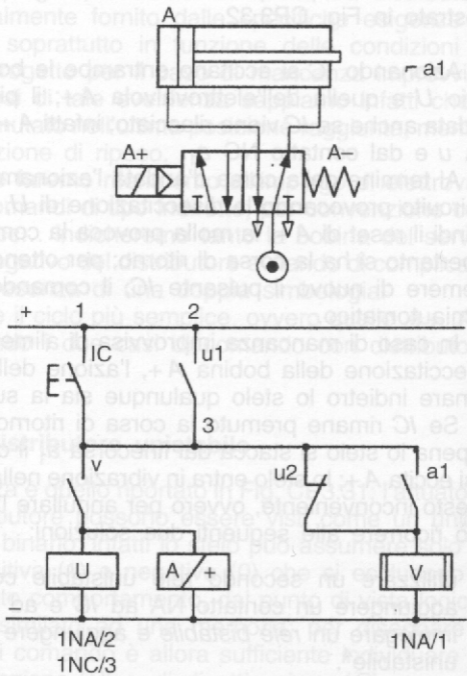
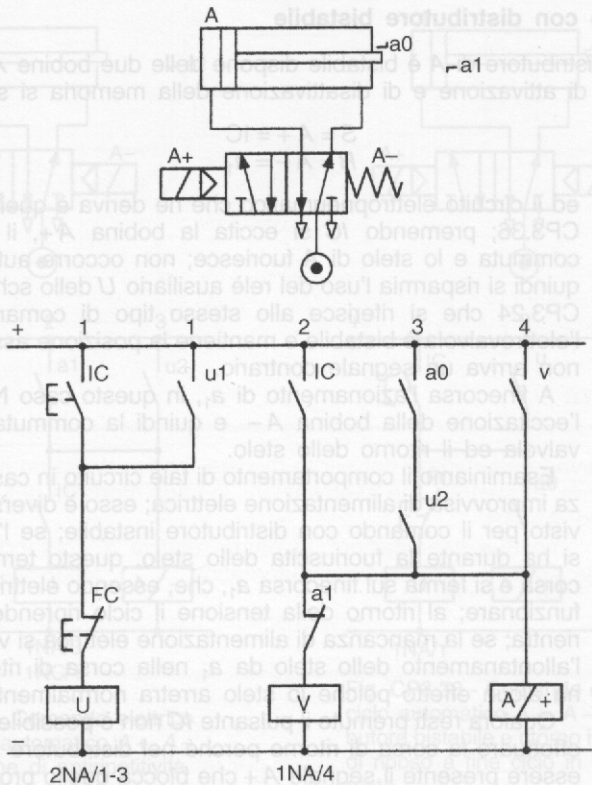
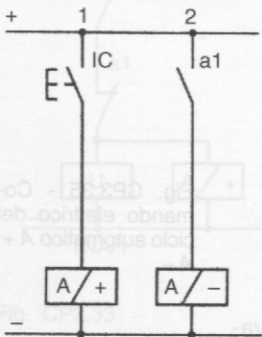
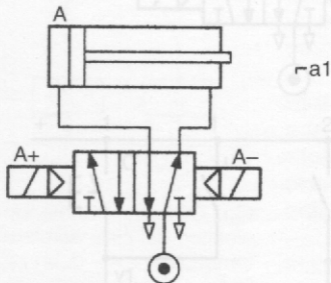
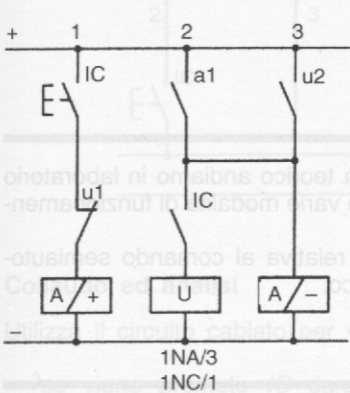
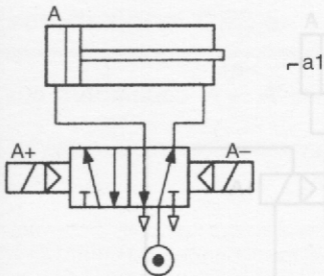
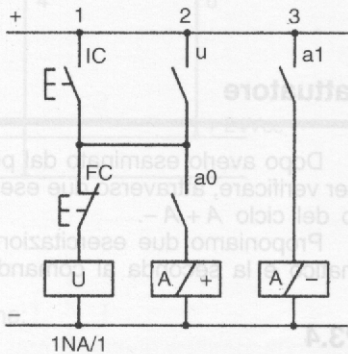
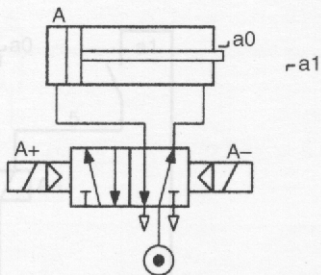


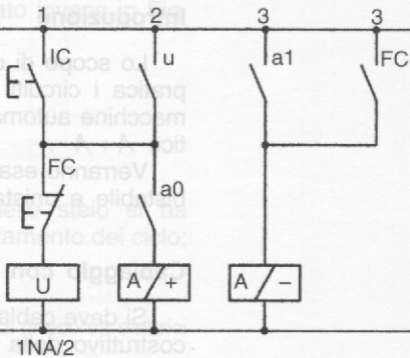
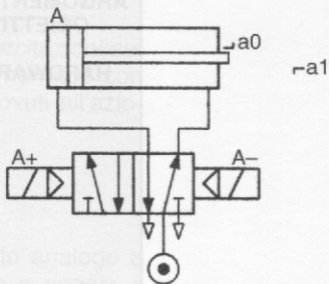
Fig. CP3.34

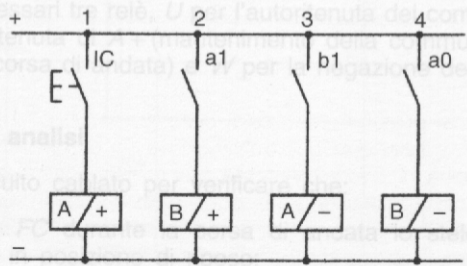
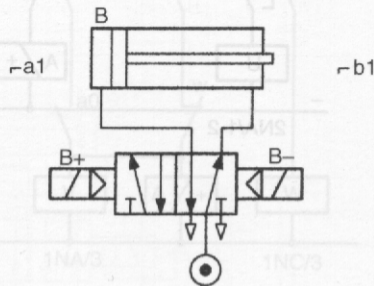
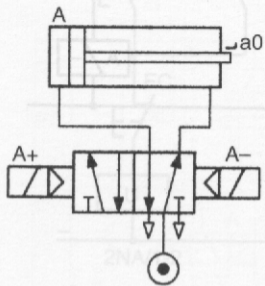


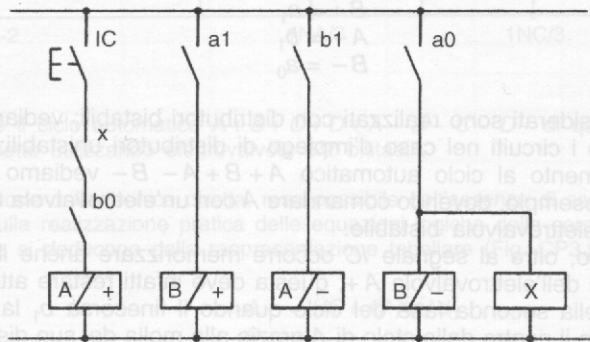
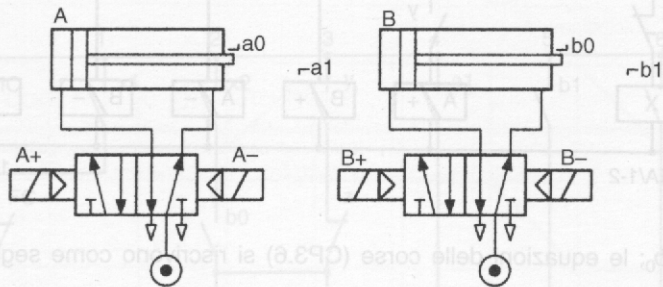




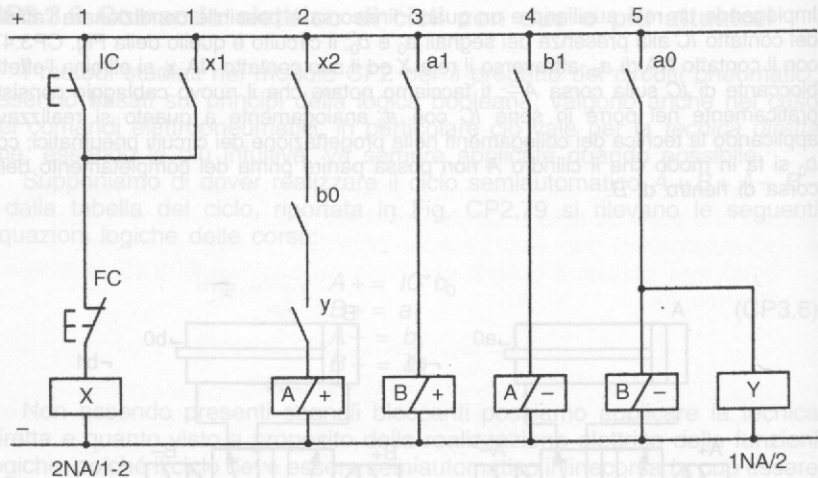








1NA/1



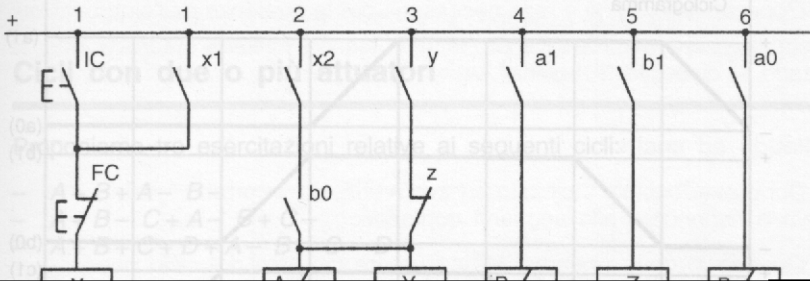
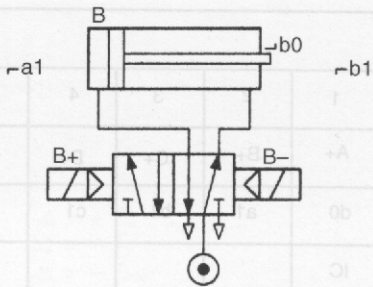
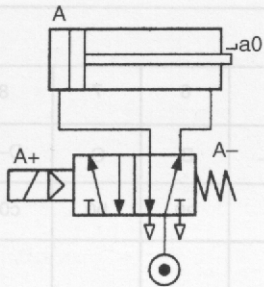
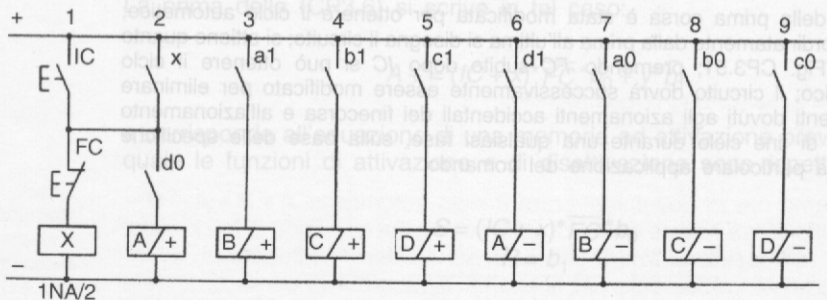
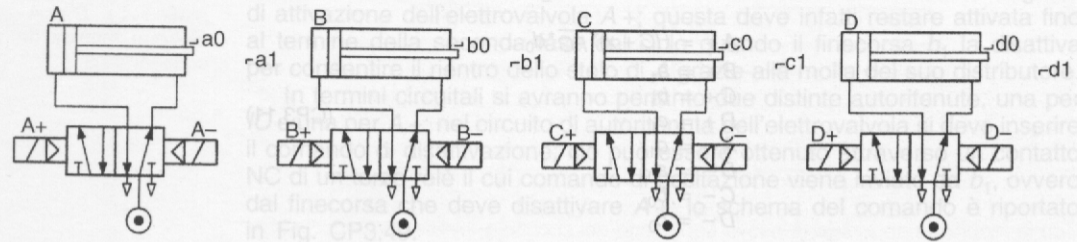
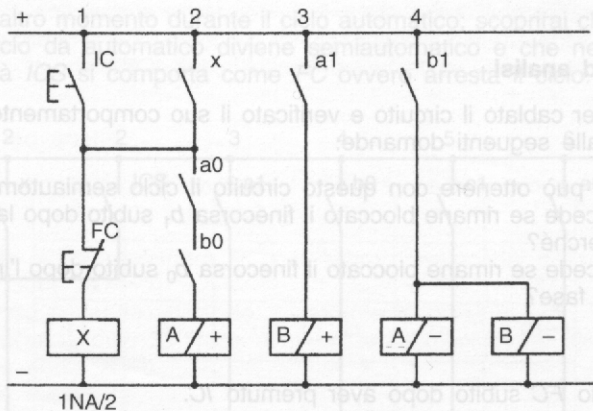
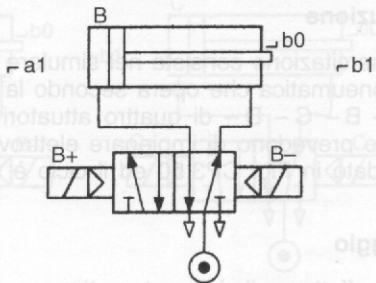
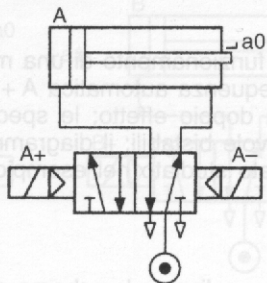


Tabella										
Fase	1	2	3	4	5	6	7	8		
Moto	A+	B+	C+	D+	A-	B-	C-	D-		
Segnale	d0	a1	b1	c1	d1	a0	b0	c0		
	IC									
Attuatori	Ciclogramma									
A	+									(a1)
	-									(a0)
B	+									(b1)
	-									(b0)
C	+									(c1)
	-									(c0)
D	+									(d1)
	-									(d0)





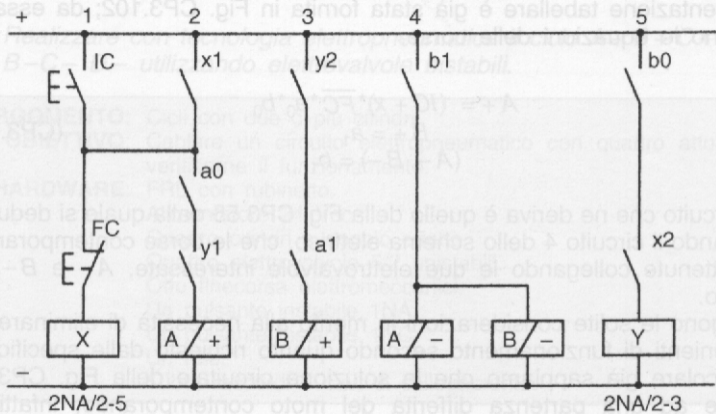
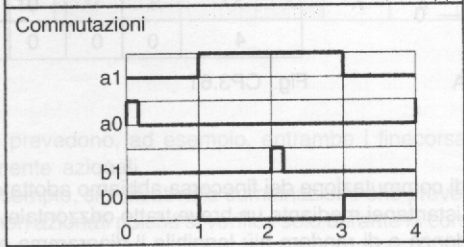


Tabella					
Fase	1	2	3	4	
Moto	A+	B+	B-	A-	
Segnale	a0	a1	b1	b0	
	IC				
Attuatori	Ciclogramma				
Stato	0	1	2	3	4

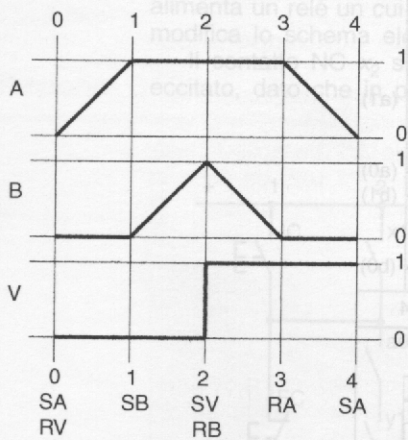


STATO	INGRESSI				USCITE	
	a0	a1	b0	b1	A	B
0	1	0	1	0	0	0
1	0	1	1	0	1	0
2	0	1	0	1	1	1
3	0	1	1	0	1	0
4	1	0	1	0	0	0

Fig. CP3.58

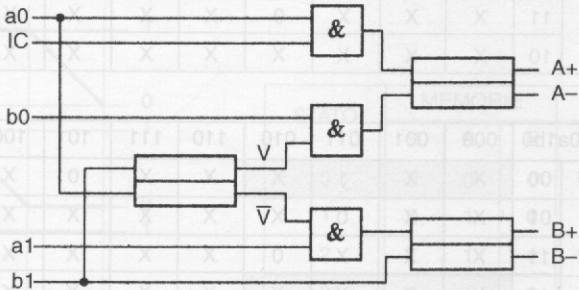
STATO	INGRESSI				USCITE		
	a0	a1	b0	b1	V	A	B
0	1	0	1	0	0	0	0
1	0	1	1	0	0	1	0
2	0	1	0	1	1	1	1
3	0	1	1	0	1	1	0
4	1	0	1	0	0	0	0

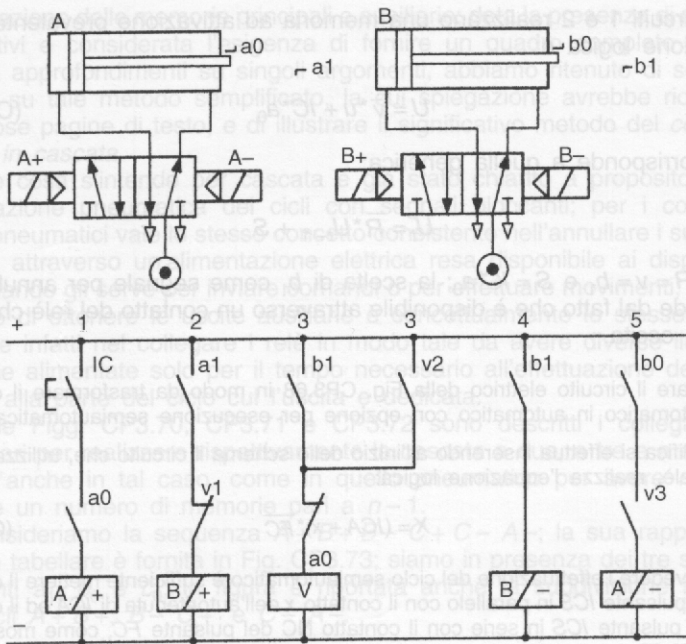
Fig. CP3.59

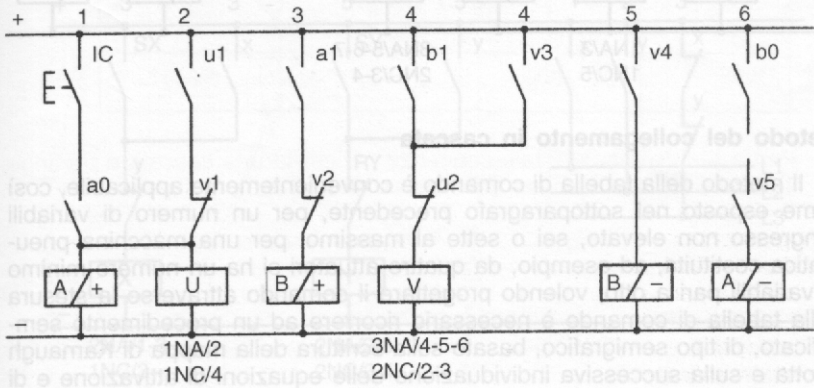


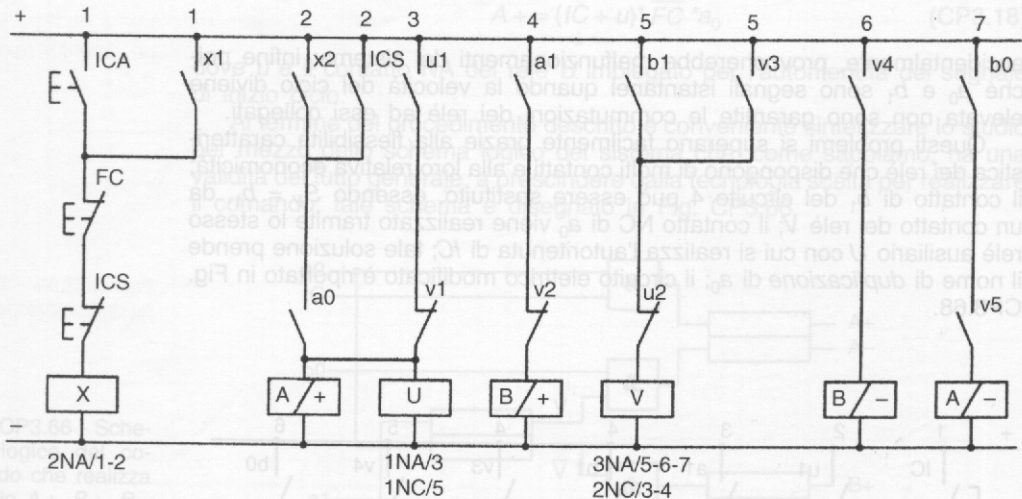
STATO	MEMORIE			COMANDI		
	V	A	B	V	A	B
0	0	0	0	R	S	
1	0	1	0			S
2	1	1	1	S		R
3	1	1	0		R	
4	0	0	0	R	S	

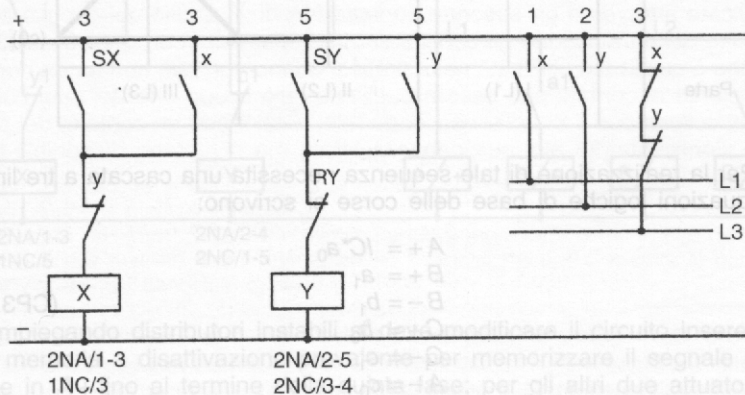
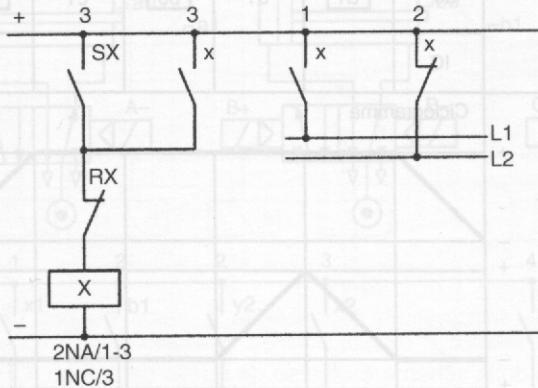
Fig. CP3.61

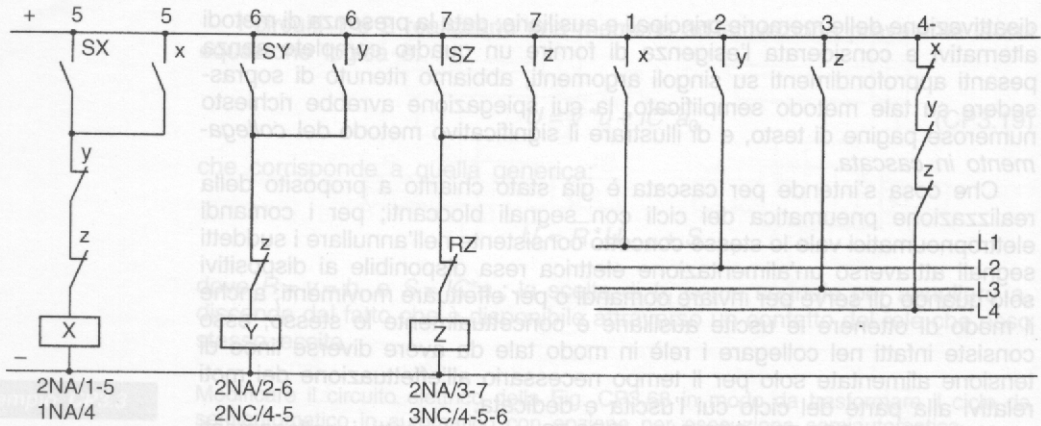












Fase	1	2	3	4	5	6	
Moto	A+	B+	B-	C+	C-	A-	
Segnale	a0	a1	b1	b0	c1	c0	
	IC						
Attuatori	Ciclogramma						
A	+					(a1)	
	-					(a0)	
B	+					(b1)	
	-					(b0)	
C	+						(c1)
	-						(c0)
Parte	I (L1)		II (L2)		III (L3)		

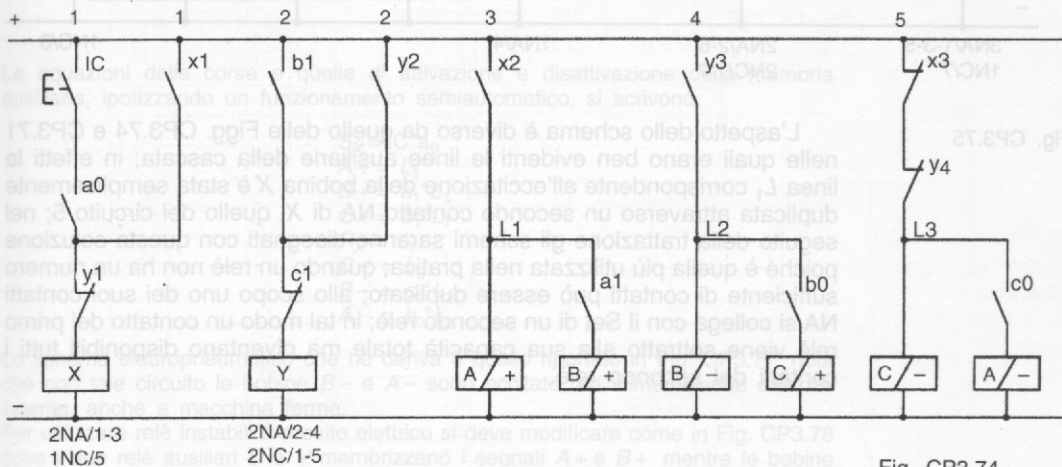
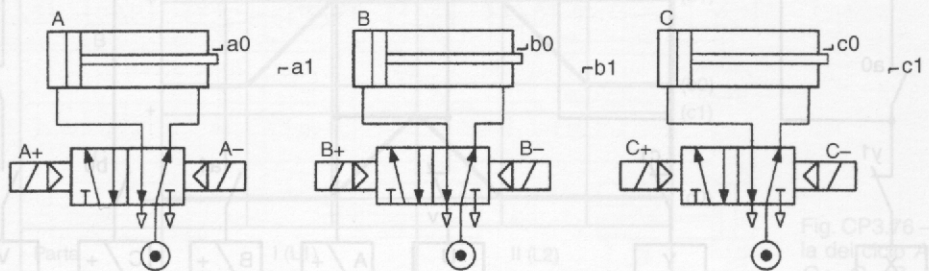
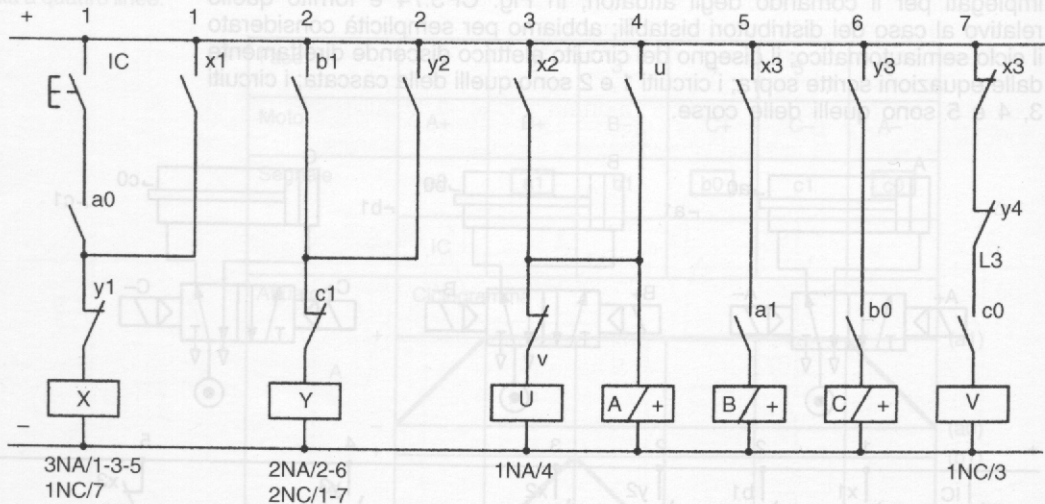
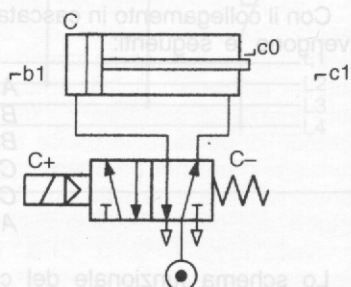
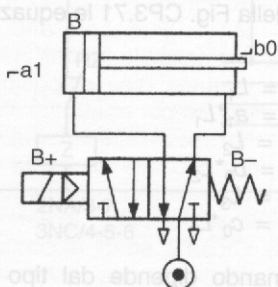
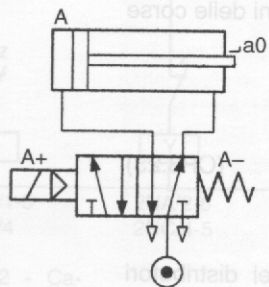
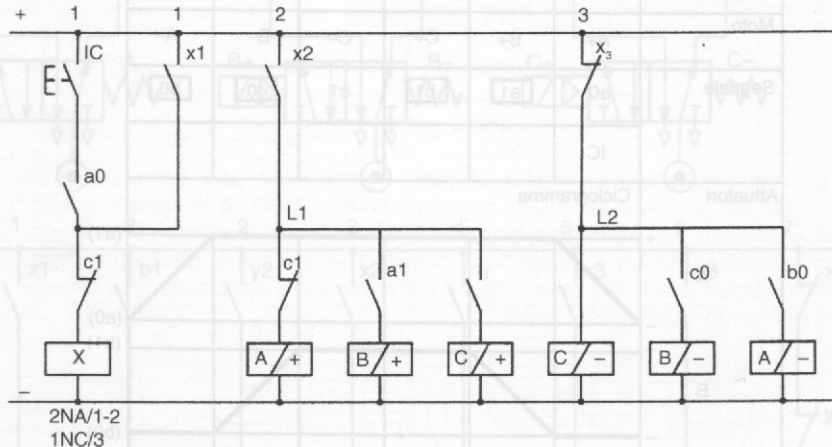
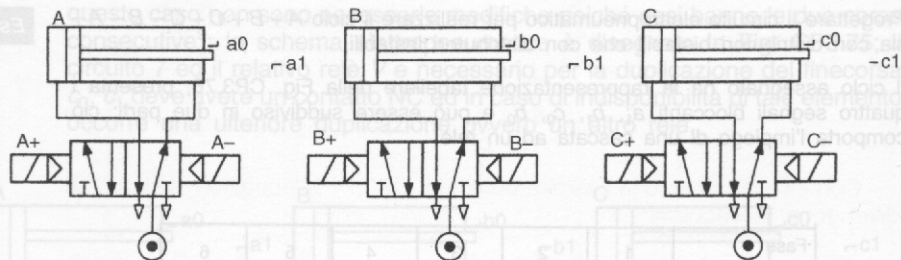
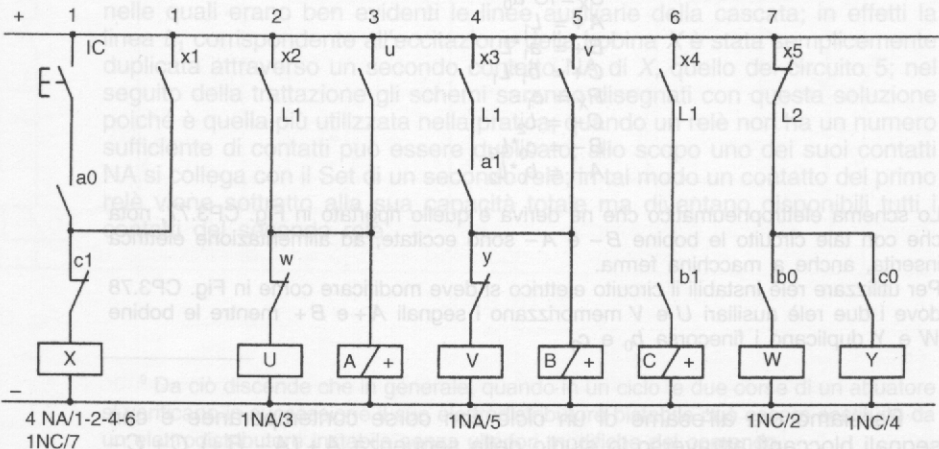
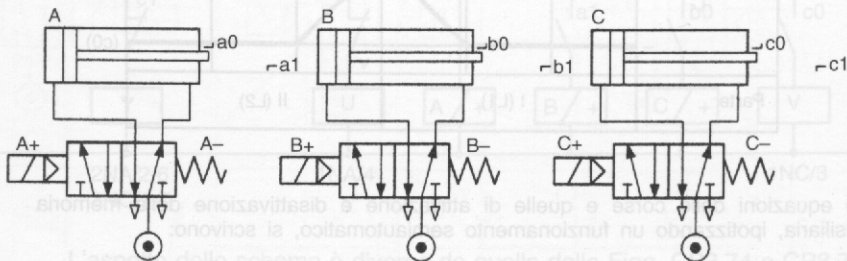




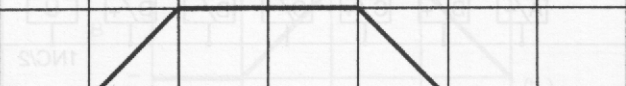

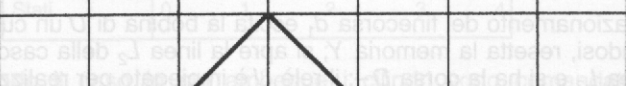
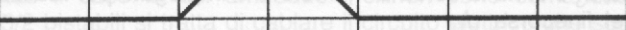
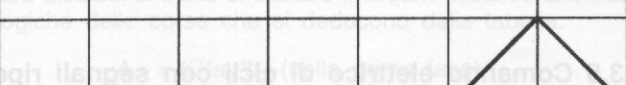
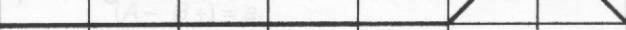
Fig. CP3.74



Fase	1	2	3	4	5	6	
Moto	A+	B+	C+	C-	B-	A-	
Segnale	a0	a1	b1	c1	c0	b0	
	IC						
Attuatori	Ciclogramma						
A							(a1) (a0)
B							(b1) (b0)
C							(c1) (c0)
Parte	I (L1)			II (L2)			





Fase	1	2	3	4	5	6	7	
Moto	A+	A-B+	C+	C-	B-	D+	D-	
Segnale	d0	a1	a0	c1	c0	b0	d1	
	IC		b1					
Attuatori	Ciclogramma							
A								(a1)
								(a0)
B								(b1)
								(b0)
C								(c1)
								(c0)
D								(d1)
								(d0)
Parte	III(L3)	I(L1)		II(L2)		III(L3)		
Stato	0	1	2	3	4	5	6	7

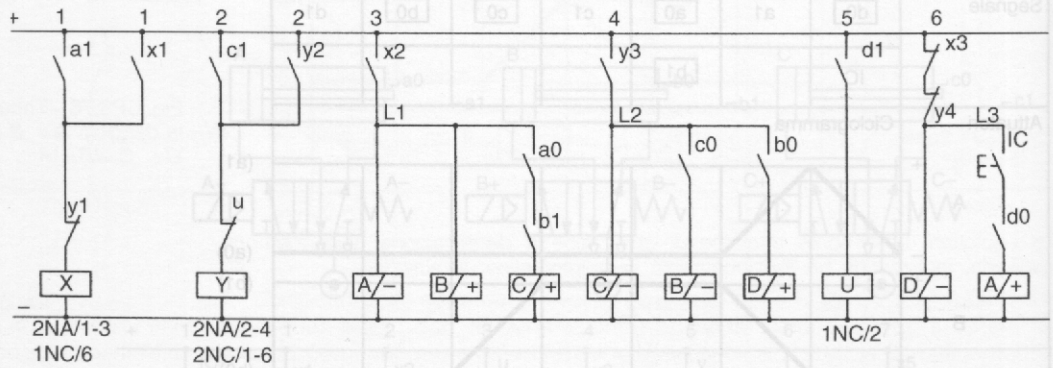
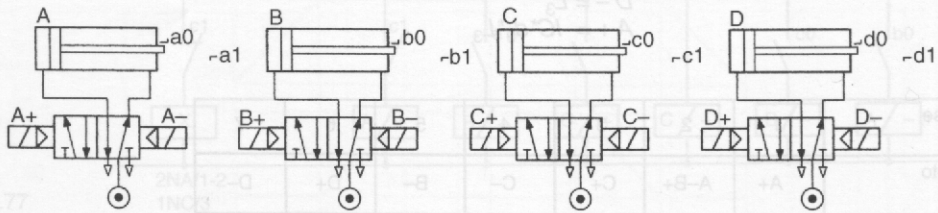


Fig. CP3.77

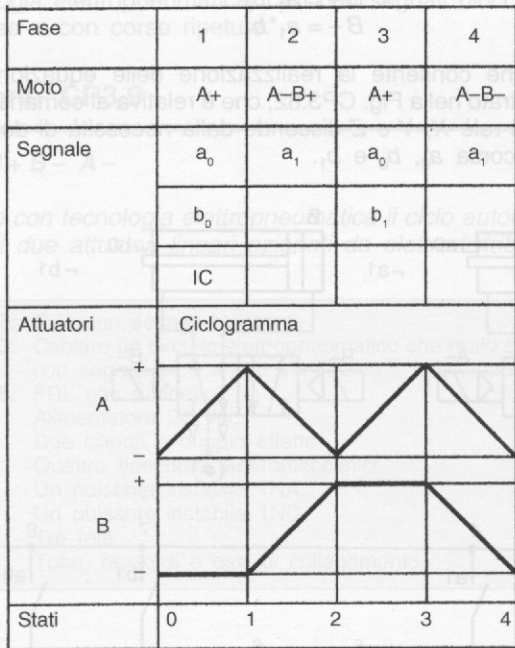
(a₁)(a₀)(b₁)(b₀)

Fig. CP3.82 - Schema elettropneumatico del ciclo automatico $A+(A- B+)$
 $A+(A- B-)$.

